

FIVE PILLARS

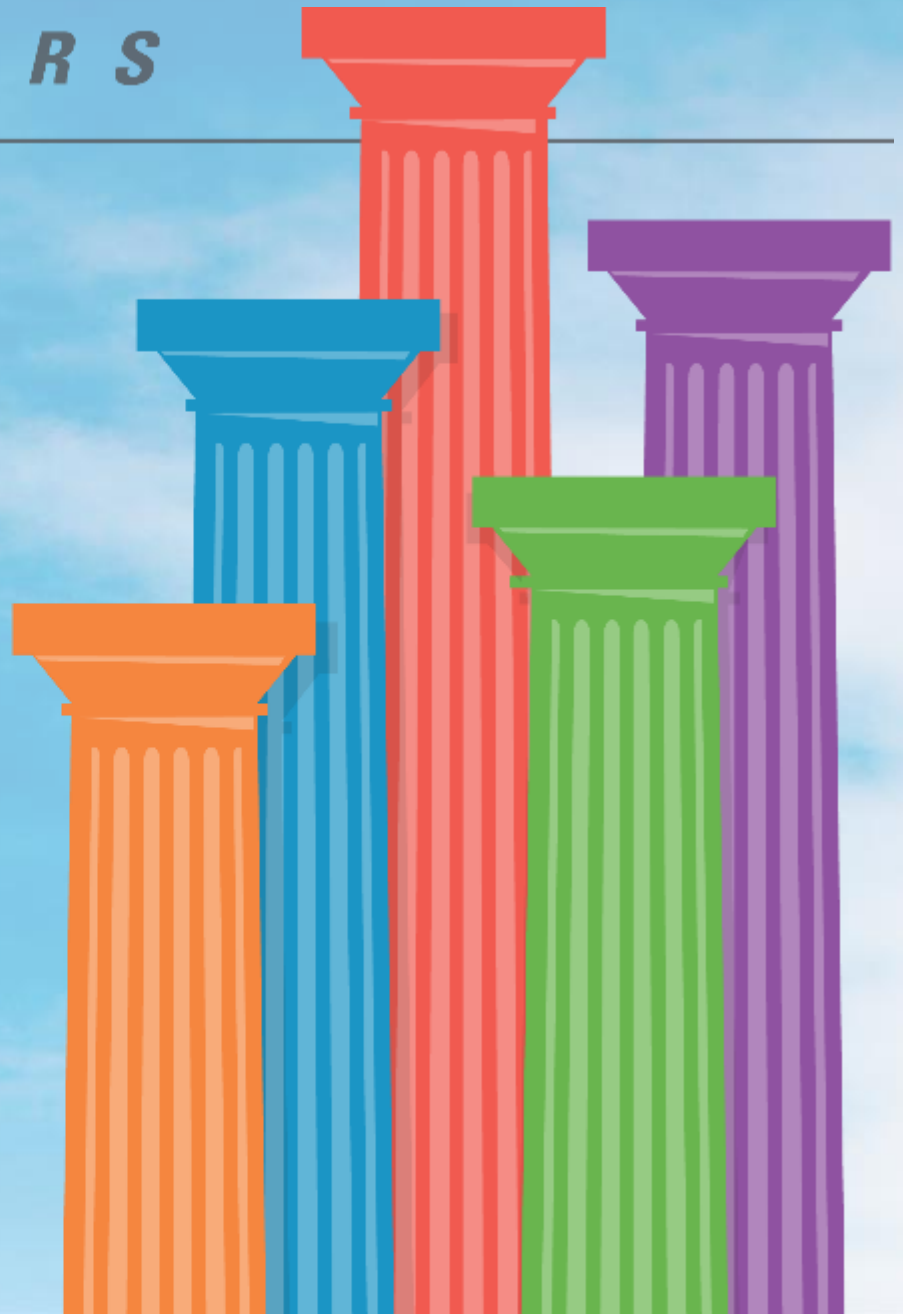
Accountability

Collaboration

Professionalism

Trust

Respect



NORMANDY SCHOOLS
COLLABORATIVE



Department of Elementary and Secondary Education Public Hearing for the Normandy Schools Collaborative

Presented by Dr. Charles J. Pearson
Superintendent of Schools

April 20, 2017



2016-2017 Financial Status

Receipts

- \$33.6 million Year to Date
- \$51.9 million Projected End of Year
- \$53.5 million Actual Last Year

Expenditures

- \$39.1 million Year to Date
- \$56.8 million Projected End of Year
- \$52.2 million Actual Last Year

Balances

- \$14.3 million Year to Date
- \$15.0 million Projected End of Year
- \$19.8 million Actual Last Year
- Of the \$4.8 million anticipated reduction in Balances, \$2.3 million is attributed to a planned spend down in the Capital Fund.**

2016-2017 District (Stretch) Goals

Standard	Content	2015 Actual	2016 Actual	2017 Goal
Academic Achievement (Points)	ELA	242.8	267.1	300
	MA	191.4	225.6	300
	SC	229.2	219.1	275
	SS	244.9	219.4	260
Subgroup Achievement (Points)	ELA	242.8	267.1	300
	MA	191.4	225.6	300
	SC	229.2	219.1	275
	SS	244.9	219.4	260
College and Career Readiness (Percentages)	1-3	34.8	33.4	38.6
	4	17	23.6	28.3
	5-6	80	90.2	93.2
Attendance (Percentages)		65.2	74.4	79.2
Graduation Rate (Percentages)	4-yr	75.9	78.8	85.4

**76.5/140
points or
54.6%
toward
accreditation**



MSIP 5 2015-2016 Analysis

MSIP 5 STANDARD	POINTS POSSIBLE	POINTS EARNED	PERCENTAGE
Academic Achievement	56.0	21.0	37.6%
Sub-group Achievement	6.0	3.0	36.7%
College/Career Ready	30.0	20.0	66.7%
Attendance	10.0	7.5	75%
Graduation Rate	30.0	30	100%
Total	140	54.6	76.5%



eEvaluate Mathematics Category Scores 2016-2017

	SEP*	MARCH**
Advanced	1 (0%)	111 (9%)
Proficient	36 (2%)	250 (21%)
Basic	78 (4%)	228 (19%)
Below Basic	1939 (94%)	602 (51%)

*Includes K-1 grades, which are tested three times a year.

** Includes grades 2-8, which are tested monthly.

eEvaluate English Language Arts Category Scores 2016-2017

	SEP*	MARCH**
Advanced	9 (0%)	120 (9%)
Proficient	80 (4%)	258 (19%)
Basic	216 (10%)	279 (21%)
Below Basic	1779 (85%)	690 (51%)

*Includes K-1 grades, which are tested three times a year.

** Includes grades 2-8, which are tested monthly.

2016-2017 End Of Course Exams

Semester 1*

Course	Below Basic	Basic	Proficient	Advanced
Algebra I	19	7	2	0
Biology	2	7	0	0
English II	2	3	0	0
Government	2	5	3	2

***New students to the district who had not taken the EOC Exams**
All students taking EOCs beginning April 24, 2017

CSIP Update

Leadership	Increase engagement and depth of knowledge; frequency of feedback; Leadership Teams; Implementation of Student Learning Objectives	On Track
Collaborative Culture	Data Team Implementation; data driven decision-making	On Track
Curriculum/ Assessment	70% of students will be at Basic or above in ELA and Math	On Track (in specific grade levels)
Effective Instruction	Increase in Student Engagement and Depth of Knowledge (Rigor)	On Track



CSIP Update

Community Engagement		
Viking Vision/ Community Forums	Include more voices in Viking Vision; Hold regular Forums (February/March); Increased communication on social media; new website to be implemented July 1, 2017	On Track
Business Office/Operational		
	Strengthen collaboration between Business Office and Human Resources; Develop consistent procedures	On Track
Human Resources		
	Effective new staff communication; Recruit high quality staff; Support evaluation system	On Track Completed/ On Track

Effective Implementation

- **Balanced Literacy/Guided Instruction**
- **Math/Guided Instruction**
- **Science/Guided Instruction**
- **Assessments**
- **Strategic Planning/Project Management**
- **Wraparound Services Model**

Professional Learning/Mission

- **School Level Professional Learning**
 - Coordinators and coaches in buildings supporting effective professional learning
- **Regional School Improvement Teams**
 - Focus on content and instruction
- **Literacy Focus**
 - Balanced Literacy (K-6)
 - Reading, Writing, Speaking, Reasoning (7-12)
- **Workforce Readiness**
 - Internships, Partnerships

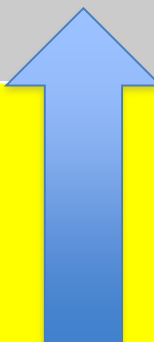
ACT, SAT, COMPASS, or ASVAB

3.1 (Percent of graduates scoring at or above state average)



3.2 (Average composite score)

3.3 (Percent of graduates participating that demonstrated improvement)



2015-2016 Target	42%
Actual	33.4%
2016-2017	39.25% (55%)



3.4 (Dual Enrollment, Dual Credit, AP Exam)

2015-2016 Target	23.8%	
Actual	23.6%	
2016-2017	32.8% (46%)	

3.5, 3.6 (Post-secondary Training, Military, Occupations, Career Education)

2015-2016 Target	80%	
Actual	90.2%	
2016-2017	96% (96%)	

College Career Ready

Dual Enrollment-Florissant Valley

Summer 2016 - 4 students

Fall 2016 - 5 students

Spring 2017 - 5 students

Dual Credit-Lindenwood University

Fall 2016 - 4 students

Gateway to College-Florissant Valley

Fall 2016 - 28 full time STLCC students finishing high school (10 seniors)

Advanced Placement Courses/Participation

AP English Language Comp; Biology; US History; Government; AP Art -
72 students

Honors Courses/Participation

English I,II,III; Biology; Chemistry; Physical Science - 108 students

Attendance/Discipline

School Year	90/90	District Wide OSS*	District Wide Enrollment
2015-2016 Target	79.2		
2015-2016 Actual	74.3	1,000	3,218
2016-2017	74.9 (79.2)	516 (700)	3,263



*Out of School Suspensions



Summary

- **Highest rate of academic progress occurs grades K-6**
- **Slower rate of growth occurs grades 7-12**
- **Grades 2-6 are ahead of where they were in ELA and Math when measuring the number of students performing Basic or higher**
- **Attendance is near the same level as 2016-2017**
- **OSS rate is declining**
- **District remains fiscally stable**

Creativity



Collaboration

Critical Thinking Communication

21ST CENTURY SKILLS





Public Comments Collaborative Dialogue

Educating for the Future.

Changing Lives Today!

